

## The LOG Newsletter January 15, 2026

*What's happening in and around the  
Village of Hickory Ridge!*

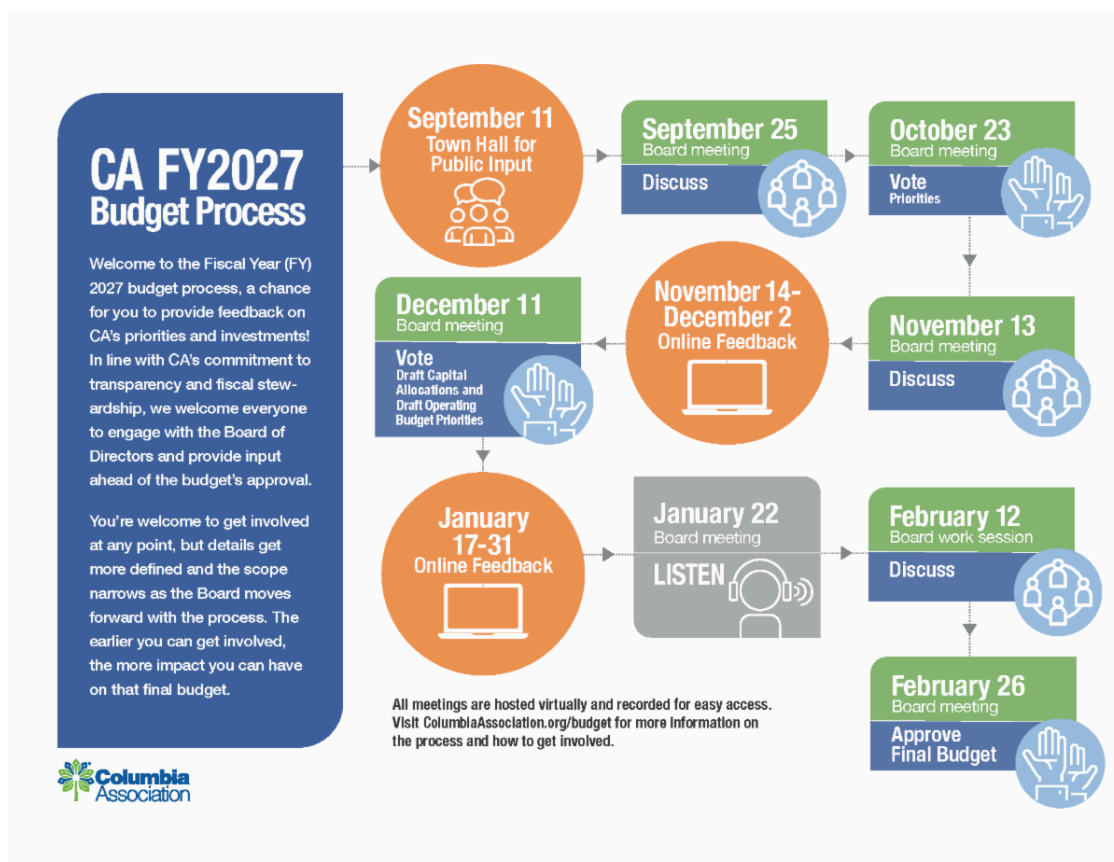
[Follow us!](#)

### Columbia Association Town Hall

Join CA's senior leadership team and Board of Directors for a Town Hall on January 22 at 7:00 pm at Slayton House in Wilde Lake. Learn more about the Fiscal Year (FY) 2027 budget and share your feedback.

They invite you to stick around for casual conversations and questions in the Slayton House lobby. RSVP is encouraged (required for complimentary childcare).

[RSVP Here!](#)



HICKORY RIDGE COMMUNITY ASSOCIATION IN PARTNERSHIP  
WITH COLUMBIA RESIDENT, ANDREW SWANEKAMP, ESQ.  
PRESENTS:

## WILLS, TRUSTS & ESTATE PLANNING BASICS

TUESDAY, JANUARY 27TH—6:30-7:30PM  
THE HAWTHORN CENTER, 6175 SUNNY SPRING

FREE TO ATTEND & ALL ARE WELCOME  
REFRESHMENTS WILL BE SERVED

RSVP TO [EVENTS@HICKORYRIDGEVILLAGE.ORG](mailto:EVENTS@HICKORYRIDGEVILLAGE.ORG)

### PROTECT WHAT MATTERS MOST

#### WILLS

Wills as a baseline to distribute assets and establish guardianship of children.

#### TRUSTS

Trusts as a vehicle to simplify distribution of assets after your death as well as protect them during your life.

#### POWER of ATTORNEY

Powers of attorney as documents that empower your trusted family & friends to make decisions when you can't and how to incorporate them into your larger estate plan

Q & A Session will follow the presentation

## Wills, Trusts & Estate Planning January 27th @ 6:30pm

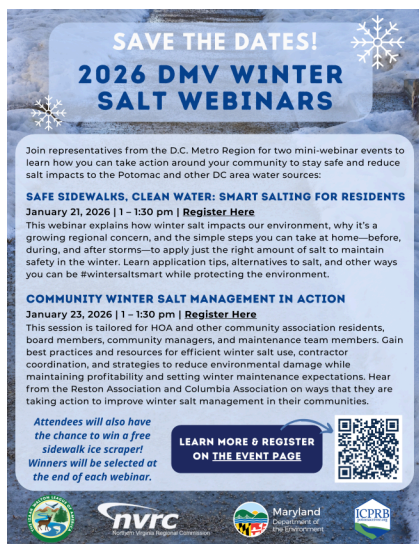
Looking to get your affairs in order but not sure where to start?

Join Columbia resident Andrew Swanekamp for an informative and easy-to-understand seminar on the basics of wills, trusts, and estate planning. Whether you're planning ahead for peace of mind or just curious about how these tools work, this session will break it all down in a friendly, approachable way.

The seminar is FREE, and everyone is welcome. Come learn valuable information that can help protect you and your loved ones—no prior knowledge needed!

Refreshments will be served, so bring your questions and enjoy an evening of practical guidance and community connection.

Please RSVP to [events@hickoryridgevillage.org](mailto:events@hickoryridgevillage.org)



**SAVE THE DATES!**  
**2026 DMV WINTER SALT WEBINARS**

Join representatives from the D.C. Metro Region for two mini-webinar events to learn how you can take action around your community to stay safe and reduce salt impacts to the Potomac and other DC area water sources:

**SAFE SIDEWALKS, CLEAN WATER: SMART SALTING FOR RESIDENTS**  
January 21, 2026 | 1 – 1:30 pm | [Register Here](#)  
This webinar explains how winter salt impacts our environment, why it's a growing regional concern, and the simple steps you can take at home—before, during, and after storms—to apply just the right amount of salt to maintain safety in the winter. Learn application tips, alternatives to salt, and other ways you can be #wintersaltsmart while protecting the environment.

**COMMUNITY WINTER SALT MANAGEMENT IN ACTION**  
January 23, 2026 | 1 – 1:30 pm | [Register Here](#)  
This session is tailored for HOA and other community association residents, board members, community managers, and maintenance team members. Gain best practices and resources for efficient winter salt use, contractor coordination, and strategies to reduce environmental damage while maintaining profitability and setting winter maintenance expectations. Hear from the Reston Association and Columbia Association on ways that they are taking action to improve winter salt management in their communities.

Attendees will also have the chance to win a free sidewalk ice scraper! Winners will be selected at the end of each webinar.

[LEARN MORE & REGISTER ON THE EVENT PAGE](#)

Logos: nvrc, Maryland Department of the Environment, ICPRB

## Winter Salt Management in Action January 23rd @ 1 – 1:30 pm

### [Register Here](#)

This session is tailored for HOA and other community association residents, board members, community managers, and maintenance team members. Gain best practices and resources for efficient winter salt use, contractor coordination, and strategies to reduce environmental damage while maintaining profitability and setting winter maintenance expectations. Hear from the Reston Association and Columbia Association on ways that they are taking action to improve winter salt management in their communities.

## Hickory Ridge Community Association Upcoming Meetings

January 15: CARES meeting, virtual  
January 21: RAC meeting, virtual  
January 26: Board meeting, *if needed*  
January 27: Wills Trusts and Estate Planning Basics

[Meeting Information](#)

## Community Mailboxes

The community mailboxes are property of the United States Postal service. If the mailbox your mail is delivered to is in need of attention, find [more information here under "Community News."](#)

[Questions for CARES Committee?](#)

## Let's Have a Party!

The Hawthorn Center is a lovely location to celebrate life's moments. Whether it's a birthday, shower, wedding or retirement party, we would love to help you host your event. Call or submit a rental inquiry for more information.



[Submit Inquiry](#)

## Who Do I Call?

Check out the Useful Information page on the Hickory Ridge website. There are phone number and/or links to various resources.

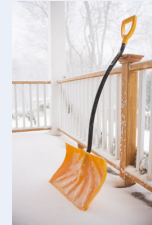
[Useful Information](#)



## Who Handles What?

Want to know who handles what—CA, the Howard County Government, or the Columbia Village Community Associations? Click [HERE](#) to see a simple breakdown.

The Community Action and Resources for Environmental Stewardship (CARES) Committee will answer your environmental sustainability questions! Email questions to [cares@hickoryridgevillage.org](mailto:cares@hickoryridgevillage.org) and CARES will answer. Some questions may be featured in future issues of The Log!



## Snow Shoveling

We are looking for people willing to shovel snow for neighbors (for a reasonable fee). If you are able to help shovel and would like your name added to our snow shoveler list, please call us at 410-730-7327 or email [events@hickoryridgevillage.org](mailto:events@hickoryridgevillage.org) and provide your name, street and phone number.

Please note that the list below are individuals interested in providing snow shoveling services but are not vetted by this office. You must contact the individual for availability and pricing.

\*David Garza: 347-574-2881

\*The McGarity Family: 410-929-5320



## CA Deer Management Survey

CA wants to hear from us about deer. *Watch the short video by Sustainability Manager Danielle Tyeryar.*

[Take the survey here!](#)

CA has over 100+ deer per square mile, many times the number our local woodlands can sustain. Deer overpopulation is leading to the following impacts – all of which will continue to get worse without addressing the issue:

- **Disrupted Ecosystem:** Over-browsing by deer alters the ecosystem in a number of ways. Deer damage new tree saplings, eat flowers that pollinators rely on, and contribute to habitat loss that affects all parts of the food web.
- **Increased Spread of Non-Native Invasives:** When deer eat native foliage, it decreases the native plant population – which makes it easier for invasive species to thrive and take over. In addition, deer can act as a vector for spreading invasive plants.
- **Damage to Yards and Gardens:** As native plant populations in natural areas decrease, deer seek food elsewhere. Deer graze on foliage in our yards from trees, shrubs, perennials and annuals.
- **Public Health and Safety Concerns:** Deer also transport ticks that carry Lyme disease, Rocky Mountain Spotted Fever and other diseases that can have serious symptoms. Certain diseases are able to spread rapidly due to high deer populations, which can cause erratic behavior that make deer more likely to cause car collisions.

[Click here](#) to learn more about diseases observed in white-tailed deer from the Maryland DNR.

## February Events!

### Please RSVP to [events@hickoryridgevillage.org](mailto:events@hickoryridgevillage.org)



**Admin Party**  
February 4th at 7pm  
The Hawthorn Center  
21+ are welcome & free to attend!

A cozy, come-as-you-are gathering to work through your personal to-do list. Bring whatever you need, wear comfy clothes, enjoy snacks and drinks, and check things off alongside neighbors doing the same.



**Monster Story Time**  
Feb. 10th & 11th at 9:30am  
The Hawthorn Center  
Designed for 0-5 year olds and their adult friend(s)

Bring your little monsters and join us for Monster Story Time! Designed for ages 0–5 and their adult friends, this relaxed program features fun, friendly monster stories, snacks, and plenty of chances to cuddle, laugh, and enjoy some time together.



**Puzzle & Desserts**  
February 27th at 6:30pm  
The Hawthorn Center  
18+ are welcome & \$20 to attend per team

We invite teams of 2 (18+) to a 500-piece puzzle competition! Teams will receive the same puzzle and will be given two hours to complete it. Gift card prizes will be awarded to the 1st, 2nd and 3rd place teams! Snacks and drinks will be provided at the conclusion of the competition. Doors open at 6:15pm and the competition will start at 6:30pm sharp! The cost to register is \$20/team.



## Join the Election Committee!

We're looking for dedicated residents to volunteer on the Election Committee for the 2026 Annual Meeting & Election Day in the Village of Hickory Ridge.

Each April, our community elects Village Board Members and a Columbia Council Representative — and we need your help to ensure a fair and smooth election process!

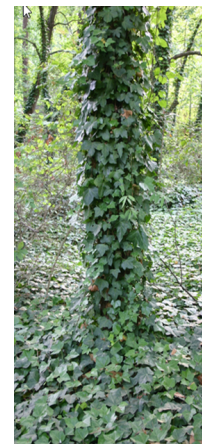
### As a Committee Member, You'll:

- Help plan and moderate Candidate Nights
- Assist with voter check-in and vote counting on Election Day – April 25, 2026
- Ensure Election Rules & Procedures are followed

### Requirements to Join:

- Be a member of The Hickory Ridge Community Association (must own or rent a Columbia Association–assessed property in Hickory Ridge)
- Be available to contribute ~15 hours of your time for meetings, Candidate Night, and Election Day
- Complete and submit the **Volunteer Application form**

Your participation is a great way to get involved, meet neighbors, and support local democracy!



## CARES Corner: Please Look Up While You Walk the Paths

While we have all seen English Ivy greening castle walls in Europe, it is NOT a nice plant. English Ivy is considered an invasive plant. It grows not only on the ground but also climbs up trees and building walls. Ivy will eventually kill the trees by blocking sunlight and weakening them, and its roots can embed themselves in mortar and siding joints eventually causing cracks that may invite water or insect damage. English ivy quickly can shade-out and outcompete understory plants, and can kill larger trees by loosening bark and allowing moisture and fungus to invade the space.

English Ivy stays green during the winter months. So please help us by identifying locations on CA Open Space where you see the ivy climbing trees this winter. IF you find some please email the CARES team at: [cares@hickoryridgevillage.org](mailto:cares@hickoryridgevillage.org).

The CARES team will work with Weed Warriors to verify the locations and determine if we can kill the English Ivy before spring. The work will NOT involve chemicals. The approach is to cut about one foot of the ivy from the ground going up the tree. In that way we deprive it of nutrients to continue growing. Eventually the ivy vine further up the tree will die. <https://extension.umd.edu/resource/english-ivy/>

**Learn More About English Ivy!**

# Know Before You Throw Donation Directory

Howard County Government does not endorse vendors or services. Please check with individual organizations before donating/consigning.



Appliances



Clothing & Shoes



Household Items



Building Materials & Tools



Furniture

Organization	Location	Contact Information	Accepted Items
<a href="#">2nd Avenue</a>	6515 Dobbin Rd Columbia, MD	443-542-5140	
<a href="#">American Veterans</a>	Prime Thrift 9800 Washington Blvd Laurel, MD	1-800-526-8387 <a href="mailto:info@amvetspickup.org">info@amvetspickup.org</a>	
<a href="#">A Wider Circle</a>	9159 Brookville Rd Silver Spring, MD	301-608-3504 <a href="mailto:contact@awidercircle.org">contact@awidercircle.org</a>	
<a href="#">Goodwill Industries of the Chesapeake</a>	Various	410-837-1800 <a href="mailto:info@goodwillches.org">info@goodwillches.org</a>	
<a href="#">GreenDrop</a>	9411 Frederick Rd Ellicott City, MD	888-944-3767 <a href="mailto:info@gogreendrop.com">info@gogreendrop.com</a>	
<a href="#">Habitat for Humanity ReStore</a>	8909 McGaw Ct Columbia, MD	410-366-1250 <a href="mailto:info@habitatthesapeake.org">info@habitatthesapeake.org</a>	
<a href="#">Home Of Our Own</a>	N/A	<a href="mailto:info@homeofourownhoward.org">info@homeofourownhoward.org</a>	
<a href="#">Salvation Army</a>	3267 Pine Orchard Ln Ellicott City, MD	1-800-728-7825	
<a href="#">Second Chance</a>	1700 Ridgely St Baltimore, MD	410-385-1700 <a href="mailto:donate@secondchanceinc.org">donate@secondchanceinc.org</a>	
<a href="#">The Loading Dock</a>	2 N Kresson St Baltimore, MD	410-558-3625	
<a href="#">Vietnam Veterans</a>	N/A	1-888-518-VETS	

Revised 08/25



Pickup service provided

## Consignment Shops

Consignment/Thrift	Location	Consign	Sell	Contact Information	Accepted Items
<a href="#">Belle Patri</a>	8895 McGaw Rd Columbia, MD	✓		410-401-4115 <a href="mailto:columbia@bellepatri.com">columbia@bellepatri.com</a>	Furniture Home Decor
<a href="#">Once Upon a Child</a>	10030 Baltimore National Pike Ste D140 Ellicott City, MD		✓	410-418-4707	Baby Gear Children's Clothing & Shoes Toys
<a href="#">Play It Again Sports</a>	9150 Baltimore National Pike Ellicott City, MD		✓	410-418-9371	Sports gear
<a href="#">Uptown Cheap skate</a>	8450 Baltimore National Pike Ste 160 Ellicott City, MD		✓	410-970-9300	Clothing, Shoes & Purses



## Online Marketplaces



Download a digital copy



Website	Free	Buy/Sell
<a href="#">Buy Nothing Project</a>	✓	
<a href="#">Craigslist</a>	✓	✓
<a href="#">Facebook Marketplace</a>	✓	✓
<a href="#">Freecycle</a>	✓	
<a href="#">Nextdoor</a>	✓	✓

[help@howardcountyrecycles.org](mailto:help@howardcountyrecycles.org) • [KnowBeforeYouThrow.org](http://KnowBeforeYouThrow.org) • 410-313-6444

Revised 08/25



Do you have a child who will be 5 years old by September 1, 2026? Save the date and join Howard County Public Schools (HCPSS) for an upcoming Road to Kindergarten parent information session. All sessions will run 6:30-7:30 p.m. and cover the same content:



- Expectations for school readiness (and receive a Ready for Kindergarten toolkit);
- Details about the HCPSS kindergarten program;
- Information about HCPSS kindergarten registration and website;
- Ways that families and children can be supported during the transition to kindergarten.

Information sessions will be offered on the following dates:

- January 20, 2026 - Guilford Park High School
- January 28, 2026 - Virtual Event, Hosted by the Howard County Library

In the event that in person sessions are cancelled due to snow, please join the virtual event on 1/28.

\*Korean, Chinese, and Spanish interpreters will be present at these sites.

\*Link to virtual event will be posted on 1/28: <https://www.hcpss.org/enroll/kindergarten/>

Please note, the session will include information regarding Kindergarten readiness, program components, and registration that is applicable to all HCPSS schools; specific school information will be shared by schools after registration is finalized. **Click here for more information.**

---

## Windy Weather

Nobody wants a neighborhood of scattered recycling. When setting items out for collection, be sure your recycling cart lids are closed and any material set outside of it is secured in a box or paper bag.

Have a recycling bin with no lid? [Contact Howard County Trash & Recycling](#) to exchange your bin for a cart with a lid and wheels.

**Remember!** The clean-up of recycling, especially in grouping areas, that is spilled/spread by animals or wind is the responsibility of the residents.



Thank you for your help keeping neighborhoods clean!

---



# DETAILED CURBSIDE RECYCLING LIST



## PAPER

- books (paperback, hardback, phone books)
- boxes (food, snack, shoe, toys)
- catalogs/magazines
- gift wrap (non-shiny/non-foil only)
- junk mail, envelopes
- kraft paper
- molded fiber (inserts & packaging)
- newspapers & inserts
- paper egg cartons
- paper insulation (Climacell)
- tubes from paper towels & toilet paper

## NO

- aseptic cartons (drink, milk, soups, food)
- foil-type gift wrap (can't easily be torn)
- ice cream containers
- laminated paper
- paper plates, bowls, cups
- paper that can't be torn easily (typically means there are plastic layers added)
- paper towels, napkins, tissues
- shredded paper
- thermal paper receipts
- wax paper

## PLASTIC

- bottles (soap, dressings, drinks, sauces)
- buckets (no metal components)
- cups (#5 only)
- flower pots (CLEAN, no soil or plant material)
- jars (peanut butter, spreads, sauces)
- jugs (detergents, milk, juices)
- large items, such as playhouses, laundry baskets, lawn furniture
- milk/soda crates
- pet carriers
- pump bottles (lotions & soaps)
- spray bottles (hair & cleaning products)
- storage bins
- takeout & reusable containers (#5 only)
- tubs (butter, cheese, yogurt)

- #1 plastic clamshell packaging (egg cartons, produce, toys, electronics, batteries)
- #5 orange pill bottles\*
- acrylic plastic (Plexiglass)
- bubble mailers\*
- CDs/DVDs & jewel cases
- coffee pods\*
- crinkly wrappers for chips & snacks\*
- drink & food pouches\*
- electronics\*
- garden hoses
- gel packs
- hangers
- insulation
- liners from cereal/cracker boxes
- motor oil or pesticide bottles
- plastic bags, film, wrap, & plastic-bagged materials\*
- plates, straws & utensils
- PVC plastics
- Styrofoam\* & packing peanuts
- toothpaste tubes, toothbrushes
- trays

## METAL

- aluminum, steel & tin cans (even pet food!)
- aluminum foil/bakeware
- EMPTY aerosol cans

- batteries & electronics\*
- compressed gas tanks (propane, helium, oxygen)\*
- hangers\*
- motor oil or other automotive fluid cans
- pots, pans or other scrap metal\*

## GLASS

- any color glass bottles & jars

- ceramics
- CorningWare or Pyrex
- lightbulbs\*
- mirrors
- non-food/drink glass (window panes, drinking glasses, furniture inserts)

## CARDBOARD

- clean, dry cardboard (no plastic bags, film or Styrofoam packaging)

- food contaminated boxes such as greasy pizza boxes\* (visit [FeedTheGreenBin.org](http://FeedTheGreenBin.org) for composting information)
- furnace filters
- Styrofoam pieces\*
- waxed cardboard (bulk/supplier produce boxes)

\*Items may be recycled beyond the curb! Visit our website for more details.

10/2025

[KnowBeforeYouThrow.org](http://KnowBeforeYouThrow.org) • 410-313-6444



## News From The Community Ecology Institute (CEI)

Did you know? CEI is a Howard County based environmental non-profit committed to cultivating communities where people and nature thrive together. They own and steward two Howard County properties - Freetown Farm (Columbia) and Green Farmacy Garden (Fulton) where they host nature-based and sustainability-focused events for participants of all ages! They have some exciting membership-based offerings for 2026 that they want to make sure are on your radar! Registration is open now, please don't delay in reserving your spot!

*For families with kids:*

Seedlings; the early childhood nature playgroup, for children ages 5 and under with a caregiver. Friday or Sunday mornings, seasonally; registration now open for winter and spring sessions; [Click to read more and register!](#)

Families on the Farm; a year at Freetown Farm with CEI's Family Nature Club. Welcoming families with kids of all ages (most engaging for kids ages 6-11 and their adults). Gathering on the third Sunday each month, families will engage in farm and nature-based projects while building community and strengthening family bonds; [Click to read more and register!](#)

### ***For teens:***

Green SEEDS Internship program; our seasonal internships offer experiential education and leadership opportunities for high school and college students to strengthen understanding and respect for personal discovery, connection to nature, food security, and land stewardship in an inclusive community. High school students receive SSL hours. College students may receive college credit. Fall, winter, and spring sessions are held after school on Wednesdays and on Saturday mornings. Summer sessions are held on Tuesdays and Thursdays.

[Click to read more!](#)

[Click to register!](#)

### ***For adults:***

Nourishing Gardens: Through the Seasons; join a welcoming community at monthly meetings where you will receive support to discuss and troubleshoot challenges that come up in your garden, interactive workshops with experienced gardeners on related topics, and tips and tricks to keep you on track for garden success! Led by our Nourishing Gardens Program Manager, a Baywise-certified Master Gardener and Columbia Association Weed Warrior, with over a decade of farm and garden experience. In-person meetings will be held the 3rd Tuesday of every month in addition to online recordings and resources.

[Click to learn more and register!](#)

CEI also offers: Second Saturday Socials for teens, monthly Repair Cafe sessions, workshops, property tours, a popular homeschool enrichment program, free community meals, and more! Our property spaces are also available to rent for events. Follow them on our website, Social Media: Facebook, Instagram and by joining their mailing list to stay up to date with all our community offerings!

---

## **Letter of Compliance**

If you are putting your house on the market, request a Letter of Compliance well in advance of a settlement date. It's best to make the request when the house is put on the market. This letter is not required, but it is a valuable tool for sellers because it verifies that your property is in compliance with the Hickory Ridge Covenants. Any covenant violations on your property become the responsibility of the new owner, so home buyers often request a Letter of Compliance from the Seller. Request forms are available on the [Sellers and Buyers page](#) of our website and at the Village Office. Questions? Email [applications@hickoryridgevillage.org](mailto:applications@hickoryridgevillage.org).



**Who Do I Call?**



Check out the [Useful Information page on the Hickory Ridge website](#). There are phone number and/or links to various resources.

**Call 988 for emergency emotional support.**  
*Safe, supportive, confidential. Available 24/7.*

## Columbia Association and Howard County



### See Click Fix

See Click Fix is an interactive website for Howard County residents to report issues to the County. Issues include, but are not limited to, roadway issues, missing street signs or fallen street signs, street tree issues, potholes, cracked sidewalks, etc. **THIS IS NOT a site for 911 emergencies or police or fire issues.**

[See Click Fix](#)



### CA Open Space Questions or Concerns?

If you have questions or concerns about Columbia Association Open Space areas, contact CA Open Space directly by calling 410-312-6330 or by emailing [Open.Space@ColumbiaAssociation.org](mailto:Open.Space@ColumbiaAssociation.org).

Columbia Association (CA) Open Space project information is now available online via CA's Project & Access Dashboard. Visit [columbiaassociation.org/open-space/development/real-estate-services/](http://columbiaassociation.org/open-space/development/real-estate-services/) and click on the Dashboard. You can view various projects, access, and requests currently taking place on CA Open Space.



### HoCo Crime Statistics Map

Howard County has interactive maps with information about properties and neighborhoods. One is the Crime Statistics map. It used to be that the Howard County Police would have to put these statistics together for us, but now they are available at



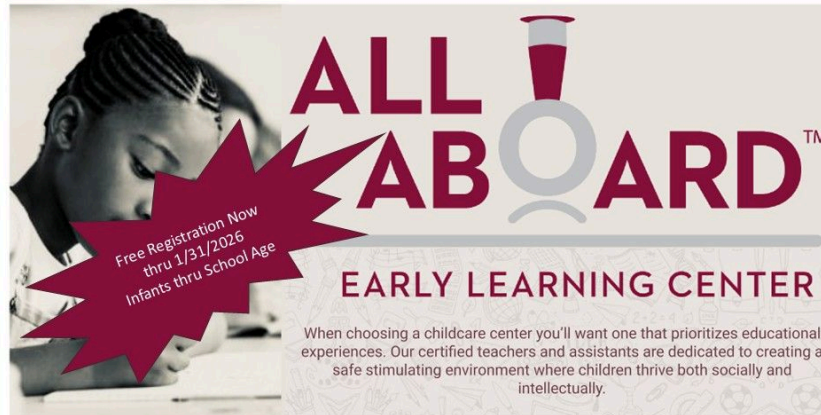
### CA Community Programs

You've made Columbia your home. You're part of a unique and diverse community, and that certainly has its benefits. At Columbia Association, it's their mission to foster a unique sense of place and enhance the quality of life. Take a moment to explore some of their many options.

Crime Statistics Map

Paid Advertisements

We offer very affordable advertising rates! For information on placing an advertisement in The Log, please email [manager@hickoryridgevillage.org](mailto:manager@hickoryridgevillage.org).



**ALL ABOARD™**

**EARLY LEARNING CENTER**

When choosing a childcare center you'll want one that prioritizes educational experiences. Our certified teachers and assistants are dedicated to creating a safe stimulating environment where children thrive both socially and intellectually.

Free Registration Now thru 1/31/2026  
Infants thru School Age

11625 Little Patuxent Parkway  
443-935-9500

5455 Harper's Farm Rd  
443-804-5400

Before and After Care to

- Bryant Woods Elementary
- Clarksville Elementary
- Clemons Crossing Elementary
- Longfellow Elementary

\*Transportation provided

Now Enrolling

Procure  
REGISTER HERE

**COLUMBIA TREE & LAWN SERVICE**

Licensed & Fully Insured  
FREE ESTIMATES

- Hedge and Tree Trimming
- Tree & Stump Removal
- Snow Plowing
- Vegetation Clearing
- Mulching
- Firewood
- Retaining Walls
- Water Flow Solutions
- Tree Planting
- Bamboo Remediation



CHARLES N. PEDDICORD, President

Licensed Tree Expert  
DNR #068

Total Home Care  
MHIC #47824

410-740-5444 410-365-6367 Cell  
[www.columbiatreeandlawn.net](http://www.columbiatreeandlawn.net)

**THE HAWTHORN CENTER**



**Event Space For Your Next Celebration!**

Conveniently located in the Village of Hickory Ridge, The Hawthorn Center offers attractively appointed and reasonably priced rental space for both social and business events.

- ♦ Free WiFi and Sound System
- ♦ Lobby and Kitchen
- ♦ Ample parking, and more



Contact us for more information

410-730-7327

[info@hickoryridgevillage.org](mailto:info@hickoryridgevillage.org)

[thehawthorncenter.org](http://thehawthorncenter.org)

6175 Sunny Spring, Columbia MD 21044

**HICKORY RIDGE COMMUNITY ASSOCIATION**



## HAROLD HOWARD'S PAINTING SERVICE

*Residential & Commercial*

Painting • Drywall • Flooring • Carpentry • Wallpaper  
Bathroom, Kitchen, & Basement Remodeling

***Proudly Serving Customers for over 30 Years!***  
Outstanding References

**410-218-6261**

**HowardPaintingMD.net**

BONDED AND INSURED • MHIC NUMBER: 47783

### Hickory Ridge Community Association

410-730-7327

The Hawthorn Center

6175 Sunny Spring, Columbia MD 21044

Office Hours: Mon-Thu 9:30am - 5pm, Fri 9:30am - 3:30pm

### Hickory Ridge Community Association

#### Hickory Ridge Village Board

**Kristine Amari**

**Mark Covington**

Vice Chair

**Steve Hannan**

Chair

**Micajah McGarity**

**Mariah Robertson**

#### CA Representative

**Skye Anderson**

#### Village Staff

**Laura Mayton**, Village Manager

**Tania Tavares**, Covenant Advisor

**Devora Wilkinson**, Covenant Advisor

**Emily Rieger**, Events Coordinator

**Heather Harvanek**, Facility Coordinator

John Pongracz, Facility Assistant

Ellen Gallagher Roberts, Facility Assistant

Daniel Nairn, Facility Assistant

Erica Carpio, Facility Assistant

Tiwana & Ed Nicholson, Custodians

#### Village Services

- Rentals of The Hawthorn Center
- Covenant Enquiries
- Information & referral
- B/W and color Copies
- Notary Public - *Please call for an appointment.*
- Free classified newsletter ad
- Fax
- Special Events
- Story Times

*Please note: fees may apply.*



[Our Company](#) | [Contact Us](#) | [FAQs](#) | [Privacy Policy](#)



Try email & social marketing for free!