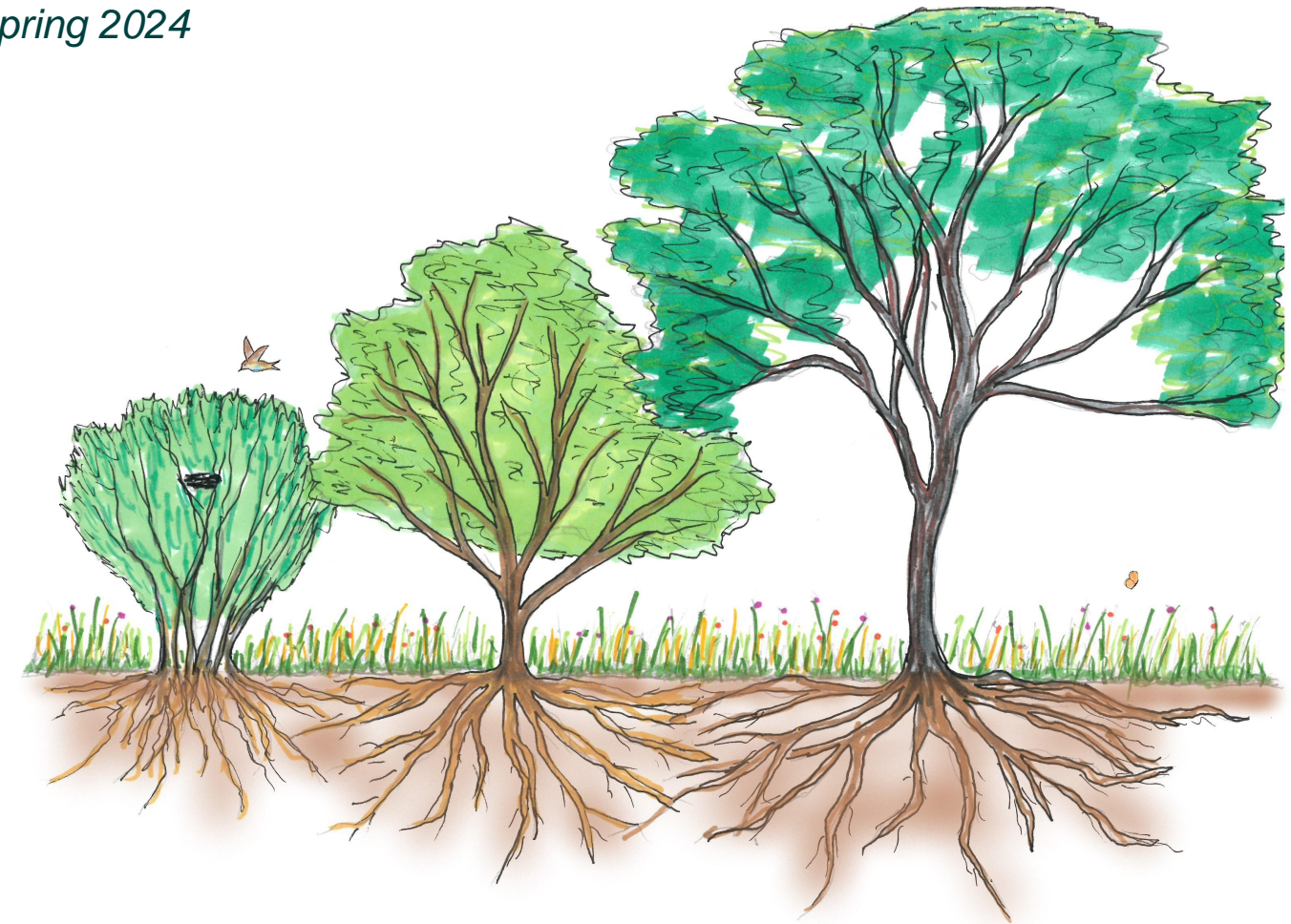
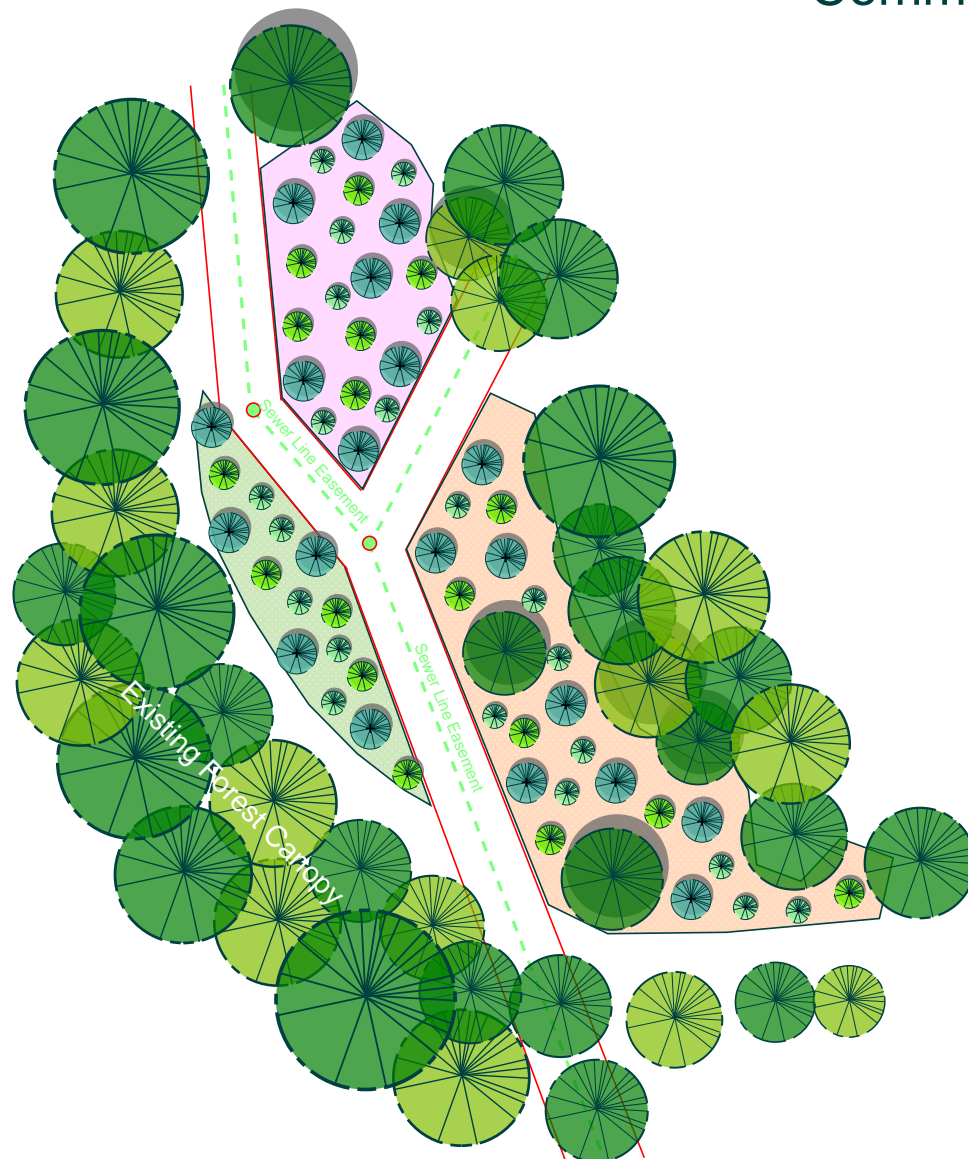


Satinwood Drive - Tree Planting Project

Village of Hickory Ridge

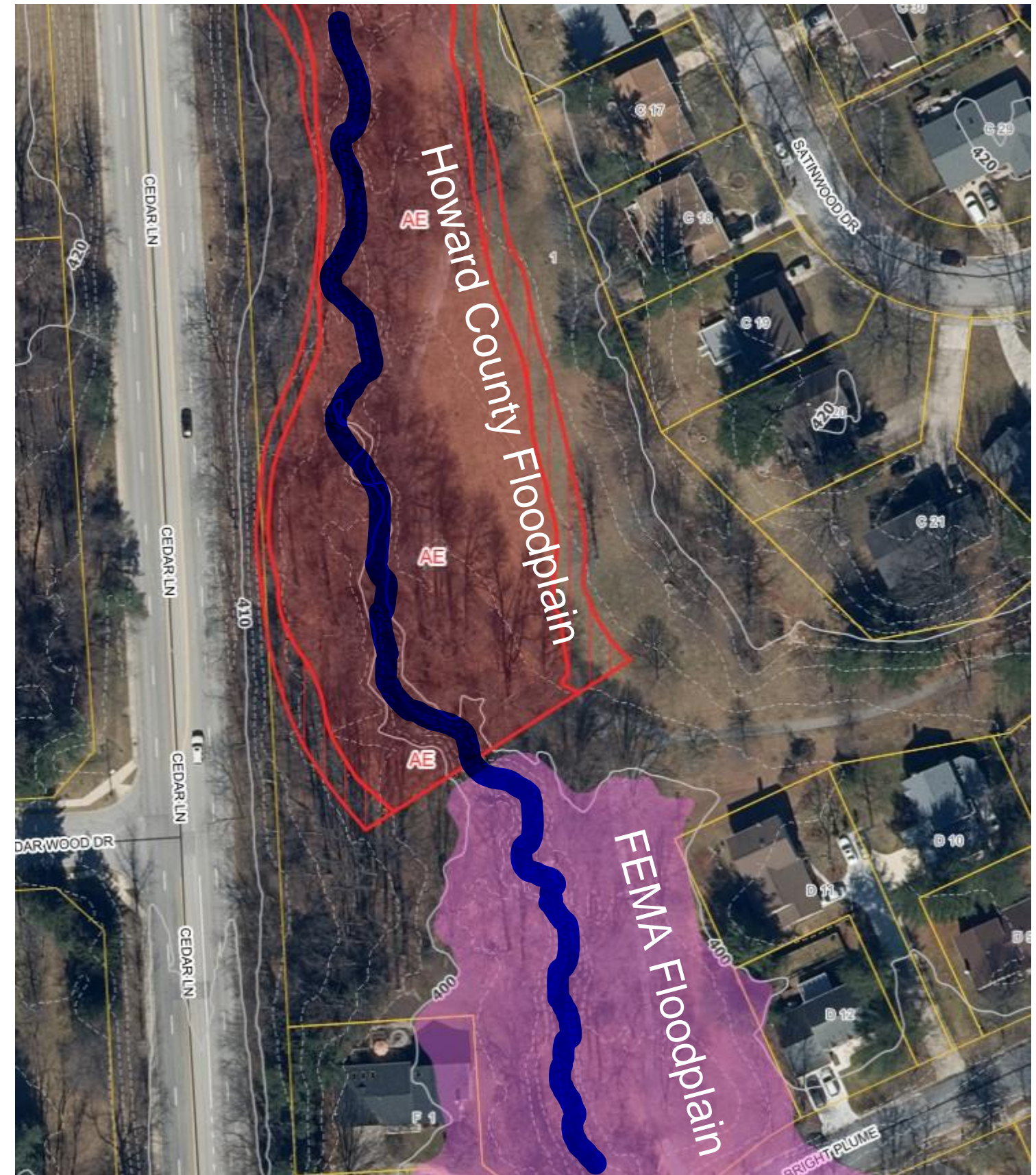
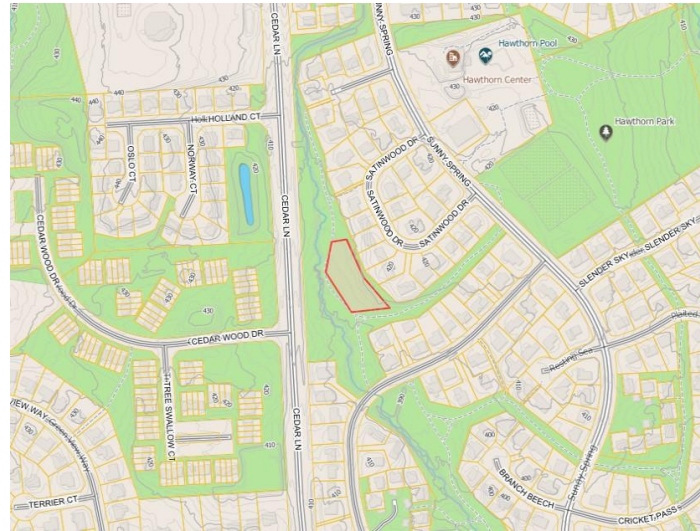
Prepared by Columbia Association
Community Operations - Open Space

Spring 2024



Satinwood Drive Open Space - Existing Site Conditions

Village of Hickory Ridge

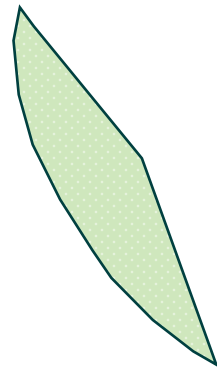





Satinwood Drive - Tree Planting Plan

Village of Hickory Ridge

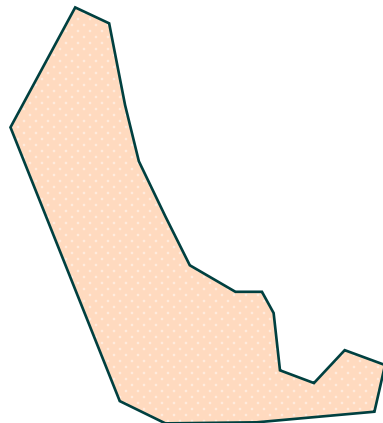
20 Canopy Trees
17 Under-story Trees
21 Shrubs
58 total plants




Zone 1 ~3,600 square feet



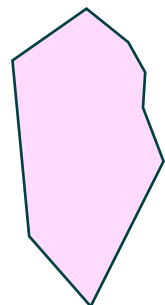
-  - 5 Canopy Trees
-  - 5 Under-story Trees
-  - 5 Shrubs




Zone 2 ~10,000 square feet



-  - 8 Canopy Trees
-  - 6 Under-story Trees
-  - 9 Shrubs

Zone 3 ~5,800 square feet



-  - 7 Canopy Trees
-  - 6 Under-story Trees
-  - 7 Shrubs



Ecological Benefits

Canopy Trees

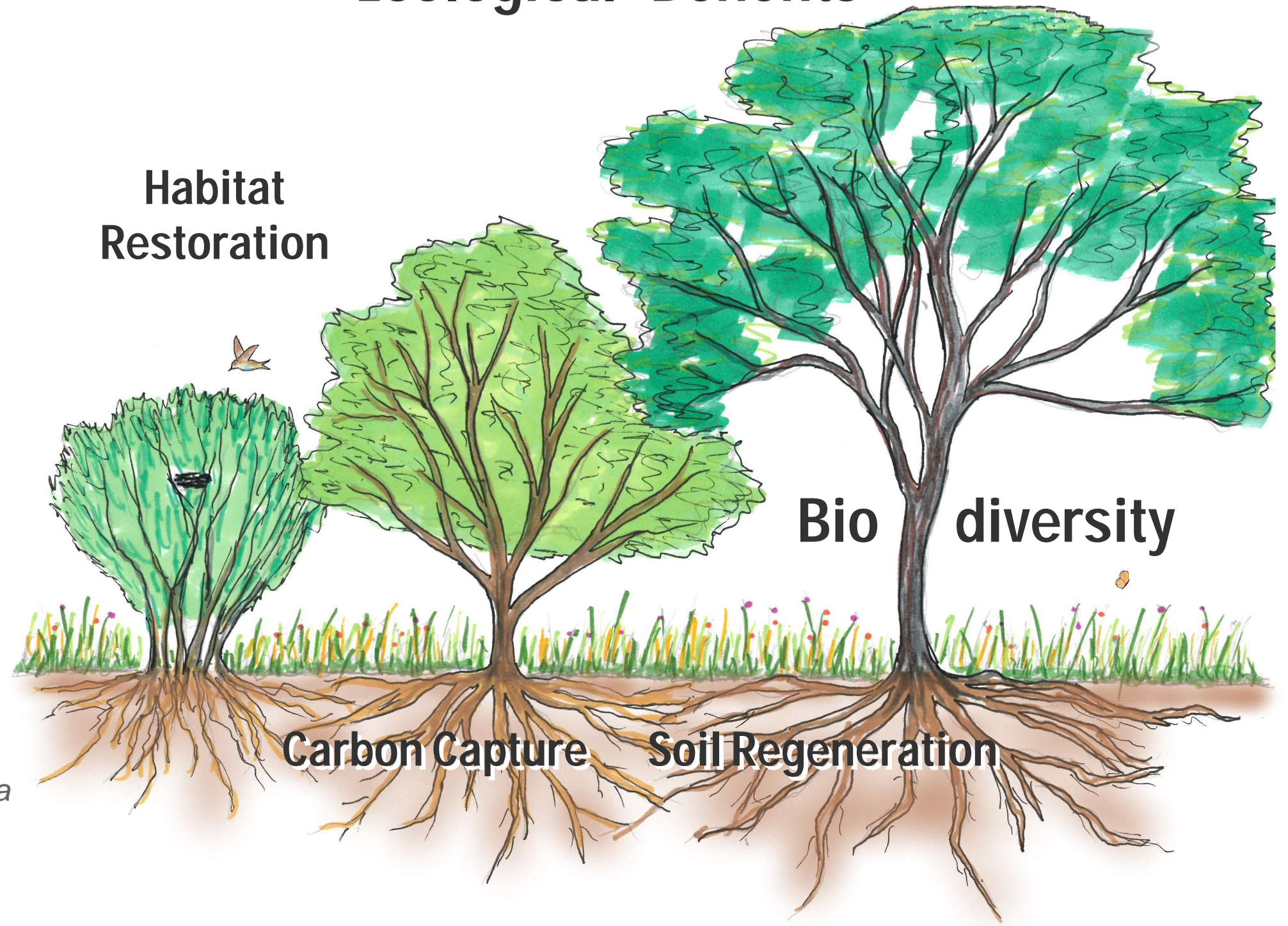
- White Oak, *Quercus alba*
- Willow Oak, *Quercus phellos*
- Swamp White Oak, *Quercus bicolor*
- Hackberry, *Celtis occidentalis*
- Bald Cypress, *Taxodium distichum*

Under-story Trees

- Box Elder, *Acer negundo*
- River Birch, *Betula nigra*
- Hornbeam, *Carpinus caroliniana*
- Flowering Dogwood, *Cornus florida*
- American Persimmon, *Diospyros virginiana*
- Sassafras, *Sassafras albidum*

Shrubs

- American Hazelnut, *Corylus americana*
- Black Chokeberry, *Aronia melanocarpa*
- American Beautyberry, *Callicarpa americana*
- Buttonbush, *Cephalanthus occidentalis*
- Witch Hazel, *Hamamelis virginiana*
- Blackhaw Viburnum, *Viburnum prunifolium*





Satinwood Drive - Tree Planting Maintenance Plan

Village of Hickory Ridge

Maintenance Plan for The Satinwood Drive Tree Planting Project														
Maintenance Task	Responsible Party	JAN.	FEB.	MAR.	APRIL	MAY	JUNE	JULY	AUG.	SEPT.	OCT.	NOV.	DEC.	COMMENTS
Watering after installation	<ul style="list-style-type: none">CA Landscape Services					x	x	x	x	x				Year 1 Initial watering after installation, occasional watering as needed
Invasive plant inspection and control	<ul style="list-style-type: none">CA Conservation Landscaping,CA Landscape Services,Hickory Ridge Village Team,Community Volunteers		x	x	x	x	x	x	x	x	x			Year 1-10 Inspect site monthly. Regular invasive plant control will be performed throughout the growing season. Largely hand pulling and removal of non-native invasive plants and propagules. Small applications of herbicide may be required for certain invasive plant species. Community volunteers such as Weed Warriors are needed to help maintain the site. The planting site should become an Adopt-A-Spot to assist with maintenance.
Replacement of native plants	<ul style="list-style-type: none">CA Conservation Landscaping,CA Landscape Services,Community Volunteers			x	x	x				x	x	x		Year 1-10, as needed
Addition of mulch to tree rings	<ul style="list-style-type: none">CA Conservation Landscaping,CA Landscape Services	x	x	x						x	x			Year 1-10 as needed
Tree shelter replacement, maintenance	<ul style="list-style-type: none">CA Conservation Landscaping,CA Landscape Services,Community Volunteers	x	x	x						x	x			Year 1-10 as needed
Overseeding native plant mix in bare or disturbed areas	<ul style="list-style-type: none">CA Conservation Landscaping,CA Landscape Services,Community Volunteers		x	x	x					x	x	x		Year 1-10